

# Micrologger2 | Winlogger Software

## Micrologger2

Micrologger2 is the surface interface system for handling logging data acquisition. It supports all Robertson Geo probes including acoustic and imaging tools.

Compact and lightweight Micrologger2 is probably the most powerful portable logging system around and with over 600 units used around the globe it has a proven record for its reliability and technology.

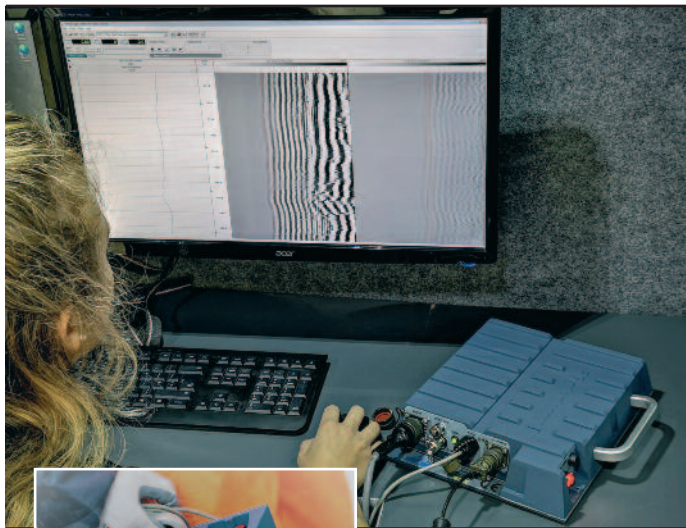
### SPECIFICATION:

#### Features

- Logging
- Supports Robertson Geo and many third-party probes
- USB high-speed link to PC Compatible with most winches/cables
- Real-time data display and printing
- Supports Windows™ printers
- Data output in LAS and Robertson Geo formats
- Modular construction for easy field maintenance

#### Part Numbers

1000184	Robertson Geo USB Micrologger2
1000204	110/220VAC power supply for ML2 and winch (up to 500m)
1000197	Canvas bag for Micrologger2
1013689	Robertson Geo Micrologger2 (video capability installed)
1000192	Micrologger2 12V PSU (Black Box)
1000211	Notebook PC using latest Windows software
1000213	Semi-Ruggedised notebook PC using latest Windows software
1014942	Fast Thermal Printer for continuous plots (Desk Top)
1014946	Fast Thermal Printer for continuous plots (Rack Mounted)



## Winlogger Software

Winlogger is the MS Windows based operating system for the Micrologger2, providing field acquisition capability, processing and reporting for the full range of Robertson Geo probes.

It is easy to operate, retaining a standard Windows™ look using familiar tool bars and drop-down menus for all frequently needed functions.

The package incorporates powerful features including a built-in compiler to allow the more advanced user to construct custom 'User Functions' to process multichannel data in real time during logging.

Robertson Geo Winlogger is supplied with a multi-user licence allowing free distribution of the software to any user of Robertson Geo log data.

This policy has proved popular with wireline service companies who may provide Winlogger to clients to allow them to replay or reprocess data in-house without resorting to 3rd-party packages.

### SPECIFICATION:

#### Features

- Support for all Robertson Geo digital slim-hole probes
- Screen/printer log display in calibrated engineering units
- Selectable depth sample interval (1, 2, 5, 10 cms etc)
- Metric and imperial logs in API format
- Custom logos and headers Data export in ASCII (LAS) format
- Compatible with Windows 10 and earlier OS

#### Part Numbers

1000466	Winlogger software
---------	--------------------

