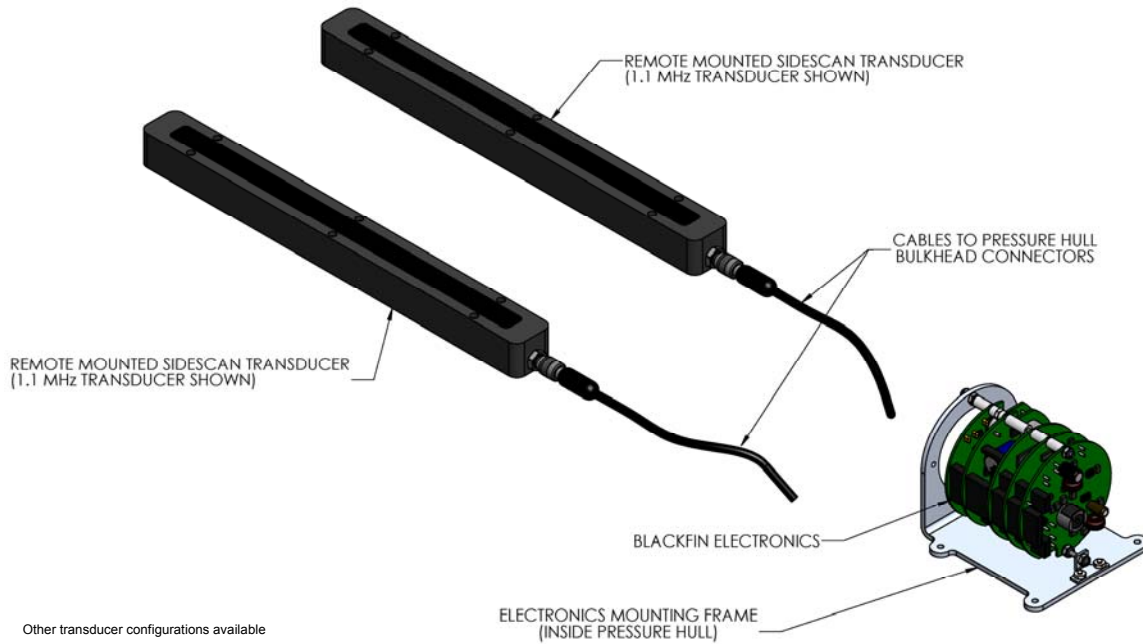


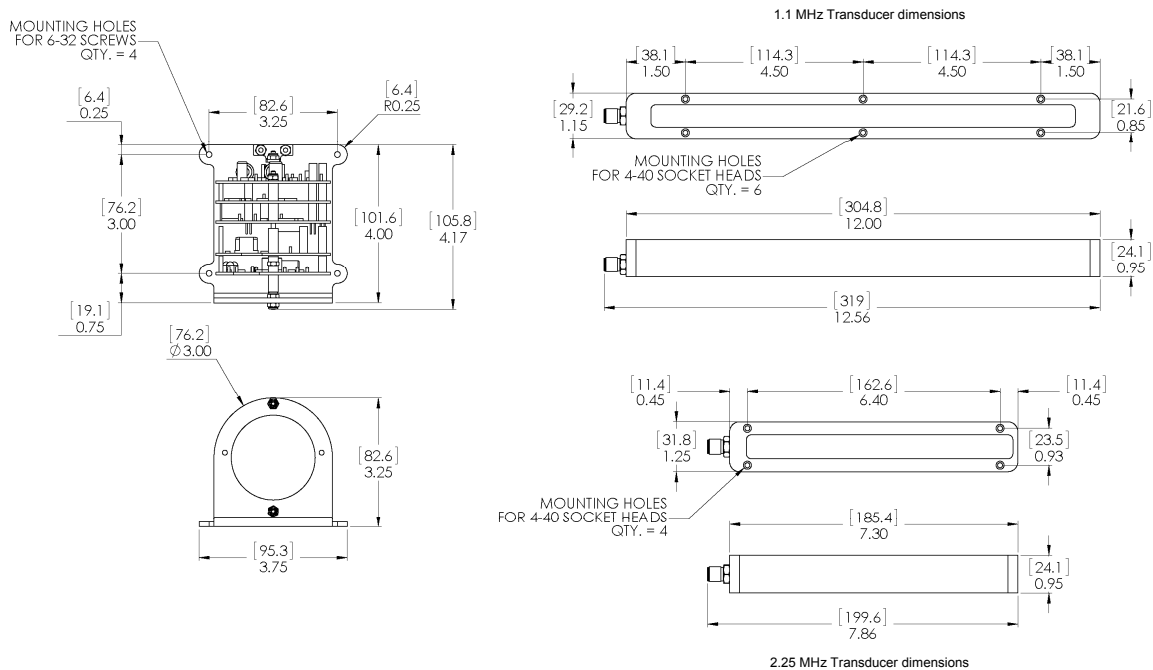
## 873 BLACKFIN SIDESCAN SONAR KIT (ETHERNET COMMUNICATIONS)



<b>HARDWARE SPECIFICATIONS:</b>	
<b>INTERFACE</b>	10/100 Mbps Ethernet
<b>FREQUENCY</b>	1.1 MHz or 2.25 MHz
<b>TRANSDUCER BEAM WIDTH</b>	0.25° x 60°
<b>RANGE RESOLUTION</b>	Range scale ÷ 1000 & Range scale ÷ 2000
<b>PULSE LENGTH</b>	10 µs CW / CHIRP
<b>POWER SUPPLY</b>	Nominal 24 VDC (20 VDC – 32 VDC) at less than 3 Watts
<b>ELECTRONICS DIMENSIONS</b>	See drawing on p. 2
<b>TRANSDUCER DIMENSIONS</b>	See drawing on p. 2 (Other transducer configurations available)
<b>WEIGHT: In Air</b>	
<b>Transducers*</b>	305 g (0.67 lbs) each
<b>Electronics</b>	270 g (0.59 lbs)

<b>SOFTWARE SPECIFICATIONS:</b>	<b>BlackFin.exe</b>
<b>WINDOWS™ OPERATING SYSTEM</b>	Windows™ XP, Vista, 7, 8, 10
<b>ZOOM MODES</b>	1x, 2x, and 4x dynamically moveable
<b>RANGE SCALES</b>	1.1 MHz: 10 m, 20 m, 30 m, 40 m 2.25 MHz: 5 m, 10 m, 15 m
<b>FILE FORMAT</b>	(filename).872
<b>RECOMMENDED MINIMUM COMPUTER REQUIREMENTS:</b>	800MHz Pentium 3 256 MB RAM 2 GB Hard Disk 1024 x 768 x 256 colour graphics

<b>COMMUNICATIONS PROTOCOL SPECIFICATIONS:</b>	
<b>ETHERNET INTERFACE SPECIFICATION (v1.00)</b>	Filename: High Resolution Sidescan Specification.pdf
<b>SOURCE CODE AVAILABLE FOR TESTING</b>	RecordData_HiRes.cpp



<b>ORDERING INFORMATION:</b>		
<b>1.1 MHz UNIT with Remote Mount Transducers*</b>	Standard	873-000-157
<b>2.25 MHz</b>	Option	-003

\*Note: Other transducer configurations available

Product and company names listed are trademarks or trade names of their respective companies.

**TAE KWANG ELECTRONICS CORPORATION**  
5TH FLR., K-BLDG., 3, SANGAM-RO 41-GIL,  
GANGDONG-GU, SEOUL 05307, KOREA

**T** PHONE : 02 479 2703  
**F** FAX : 02 479 2705  
**E** e-mail : taekwang@nuri.net  
**W** http://www.tkec.co.kr